



ANNUAL REPORT

2015-2016

MATA SHITALA DEVI SEVA SANSTHAN

REGD.OFFICE:

At-Bageshwari Road, Dist.-Gaya, Bihar

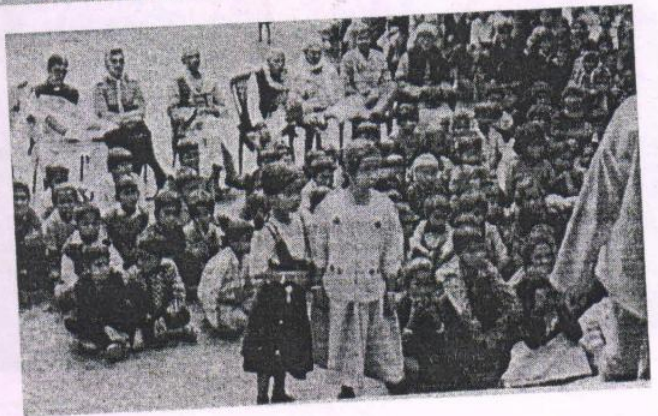
To,
The Members,
MATA SHITALA DEVI SEVA SANSTHAN

Hon'ble Members
Your Executive Committee takes pleasure in presenting Annual Report for the year ending 31st March 2016 along with Audited Annual Accounts for the year ended on that date. During the year under review, the following are our achievements.

ACTIVITIES & PROGRAMMES

HEALTH & FAMILY WELFARE PROGRAMME

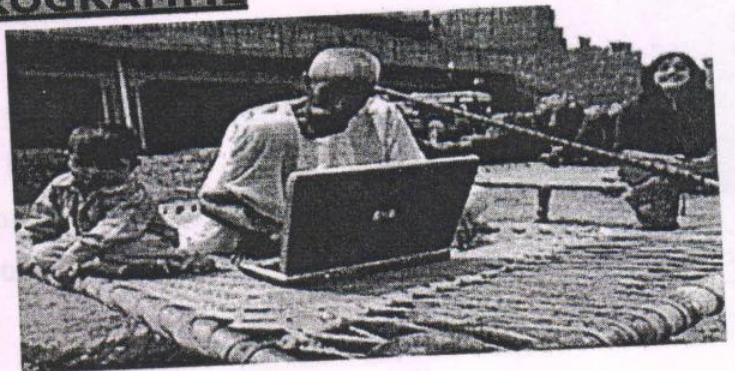
Population stabilization has been a priority area for sustaining the process of economic development in the country. This has been also the focus of successive five-year plans. BIHAR lags behind not only in containing population growth to manageable limits but also in realizing the goals fixed on the health front.



As we know that the increased access to equality health care services has been one of the thrust areas of the social development programmes being undertaken in the country. Technological advances and the extension in the infrastructure network has resulted in a decline in mortality. But the burden of disease continues to be important. Our society organized a series of health camps on a regular basis in different villages of GAYA district in BIHAR state.

RURAL DEVELOPMENT PROGRAMME

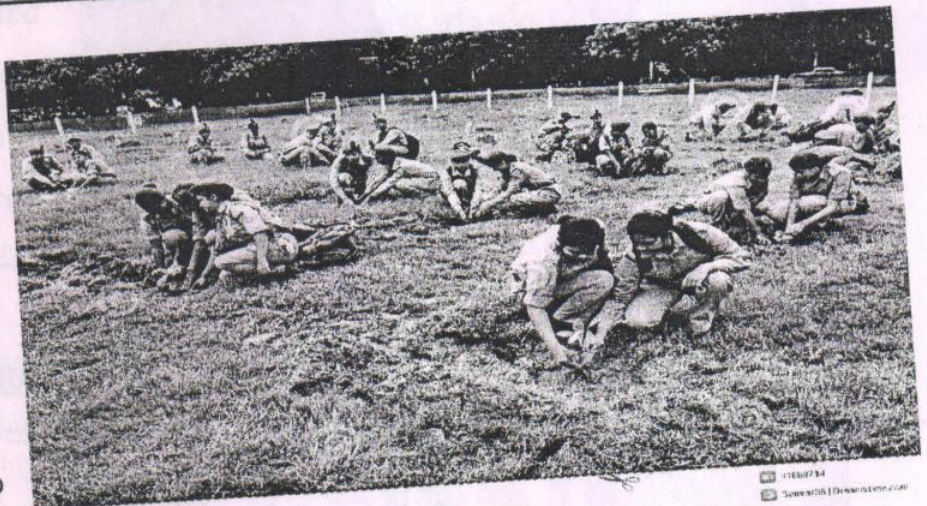
Society organised many programme for rural development and working for enlistment of the life and livelihood of rural India. It aims to promote a single window delivery need based services in the areas of education, health, nutrition,



weather, environment, agriculture and livelihoods to rural women and men. According to society developmental programme for rural areas is necessity to up gradation of economic, social and gender equity. Society helps to enhance ecological and livelihood security and accelerate human development and quality of life by taking the benefits of the space age for improving the productivity, profitability and sustainability of agriculture and for generating value addition on farm and non-farm employment.

ENVIRONMENTAL AWARENESS PROGRAMME

It has become a challenge for us to get familiar with our environment issues and contribute collectively for improving our quality of life. This can only be possible through imparting both formal and informal environment education to each of us young and old and transcending classes of people.



Download from
Dreamstime.com

Our society working for community involvement, we know that success of project involvement of community is most important. To protect environment our society starting intervention programmes in many panchayats of project area. For involvement and interact of community our society working social & cultural activities, wall writing, banners and distribution of advertisement goods.

YOGA & NATUROPATHY TRAINING PROG..

Kaivalyadhama teaches and follows the Ashtanga Yoga of Patanjali, the yogic seer of the eighth century. Patanjali, who was the first to standardize yoga practice, drew up eight steps for silencing the mind: restraints and observances, postures, breath



control, withdrawal, slowing of mind, contemplation and meditation. These eight limbs systematically wash away the impurities of the mind, making it progressively pure and cleansed.

YOUTH WELFARE & TRAINING PROGRAMME

Youths are the strength of nation.

Therefore to motivate youth in national spirit and integration is emphasized. A camp was organised in urban, the aforesaid concept.

Youths & Sports were organised in the camp and various topic from

history were discussed. Youths & Sports participated in meeting were, taken the oath for national integrity.



CONSUMER AWARENESS PROG.

Consumer awareness need of time. The people do not know their rights and provisions of consumer protection law. Your organisation had taken the challenge for consumer awareness. We had organised a seminar on this topic, various intellectuals and educationist had attended the seminar. Our organisation had very care for Environmental



awareness among people. We have organisation rally on world environment day. Your organisation had organised an easy and painting competition of children, we have lunch a series of banners and posters in the city displaying needs for environment care. A women chain had been organised on world environmental day. Our organisation had very care for Environmental awareness among people. We have organisation rally on world environment day. Your organisation had organised an easy and painting

competition of children, we have lunch a series of banners and posters in the city displaying needs for environment care. A women chain had been organised on world environmental day.

CULTURAL PROGRAMME

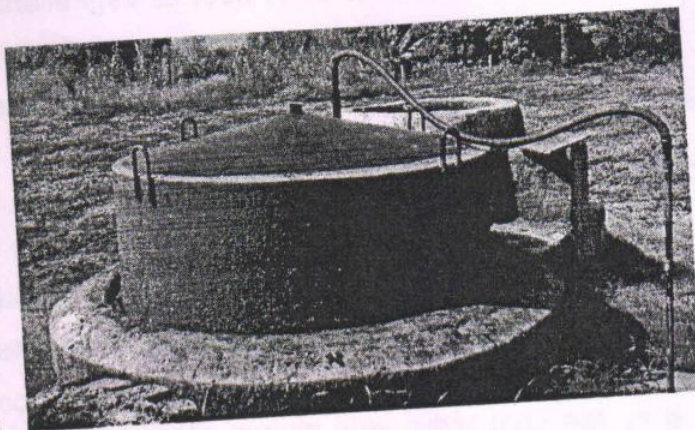
To preserve our rich cultural heritage and traditions we organized dance, folk-song, drama etc. in which young and children participated in good number. Participants were also awarded for their presentation. Drama, Dance competition, folk art festivals,



Music etc. cultural show competition organized by society for entertainment of people and their welfare. Apart this a meeting organized of folk artists on the National festivals Gandhi Jayanti, Republic Day & Independence Day and Teacher's day.. The culture of a country is regarded as accumulated intellectual, emotional and spiritual wealth of that nation. The present day our culture seems to be falling down, so we have the responsibility to sustain our culture and tradition through anyway whether we can do, so we organized many Programmes for it.

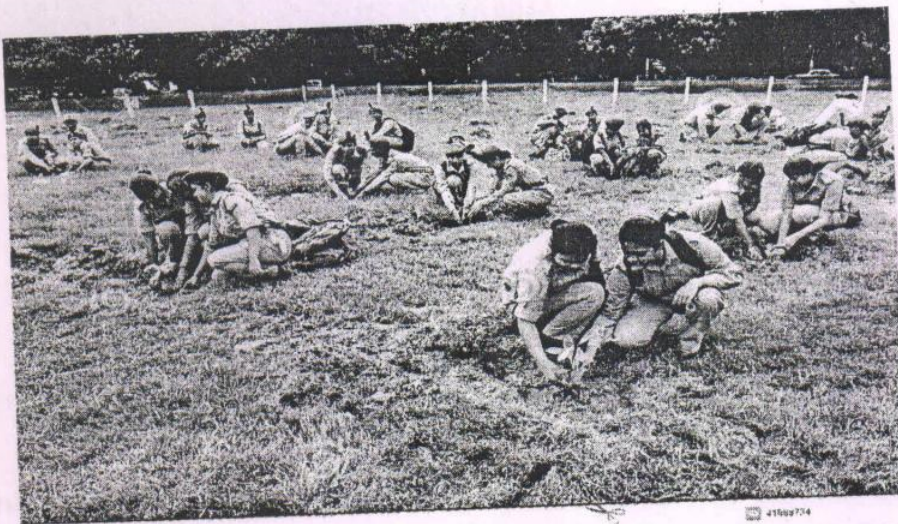
GOBAS GAS PLANT

Biogas typically refers to a mixture of different gases produced by the breakdown of organic matter in the absence of oxygen. Biogas can be produced from raw materials such as agricultural waste, manure, municipal waste, plant material, sewage, green waste or food waste. Biogas is a renewable energy source and in many cases exerts a very small carbon footprint.



MEDICINAL PLANTATION PROGRAMME

It has become a challenge for us to get familiar with our environment issues and contribute collectively for improving our quality of life. This can only be possible through imparting both formal and informal environment education to each of us young and old and transcending classes of people.



Download from
Dreamstime.com

41589734
© 2015 Dreamstime.com

Our society working for community involvement, we know that success of project involvement of community is most important. To protect environment our society starting intervention programmes in many panchayats of project area. For involvement and interact of community our society working social & cultural activities, wall writing, banners and distribution of advertisement goods.

WOMEN AND CHILD WELFARE PROG.

Education especially for Child & women labour awareness programme is an important agent of socialization, and instrument of social transformation, and a channel of social mobility and equity. Education of Child labour and women has to be a universal movement for their empowerment, for changing current stereo-typed and replacing the existing structures.

Within an overall orientation toward girls' education, your organisation is running Programme being one of the parts of overall strategy of universalisation of Elementary Education is an alternative path to children who for different reasons cannot attend primary school e.g. girls who have to look after their younger siblings and attend to other domestic chores, working children etc.

GIRLS EDUCATION AWARENESS PROGRAMME

Girls Education Awareness Programme especially for Girls Education Awareness programme is an important agent of socialization, and instrument of social



transformation, and a channel of social mobility and equity. Education of Girls and women has to be a universal movement for their empowerment, for changing current stereo-typed and replacing the existing structures.

Within an overall orientation toward girls' education, your organisation is running Programme being one of the parts of overall strategy of universalisation of Elementary Education is an alternative path to children who for different reasons cannot attend primary school e.g. girls who have to look after their younger siblings and attend to other domenotic chores, working children etc.

AMANAT TRAINING

Our society had organized Amanat Training prog. in Different place of Gaya District. Many peoples are benefited this training prog.

RAJ MISTRI TRAINING

Our society running training prog. for Raj Mistri. In order to improve the work performance of construction industry and to generate value added employment opportunities, Construction Industry Development Council (CIDC) as the apex organization representing the Government and the construction Industry, had initiated a country wide Human Resource Development initiative focused on developing a formidable work force to fructify various Infrastructure Development Projects in the Nation and also abroad.

HANDICAPPED PROG.

A major outcome of the International Year of Disabled Persons was the formulation of the World Programme of Action concerning Disabled Persons, adopted by the General Assembly on 3 December 1982. The World Programme of Action (WPA) is a global strategy to enhance disability prevention, rehabilitation and



equalization of opportunities, which pertains to full participation of persons with disabilities in social life and national development. The WPA also emphasizes the need to approach disability from a human rights perspective.

Its three chapters provide an analysis of principles, concepts and definitions relating to disabilities; an overview of the world situation regarding persons with disabilities; and set out recommendations for action at the national, regional and international levels.

"Equalization of opportunities" is a central theme of the WPA and its guiding philosophy for the achievement of full participation of persons with disabilities in all aspects of social and economic life. An important principle underlying this theme is that issues concerning persons with disabilities should not be treated in isolation, but within the context of normal community services.

SCIENCE & TECHNOLOGY DEVELOPMENT WORKSHOP

The role of science & Technology in overall progress of the society could never be ignored. It is to be used in all the sectors of planning. So your organization had organized a Science Exhibition to explore the techniques Laws of Science before the people in a simple way. A workshop has also been conducted about the role of Science & Technology in **Gaya** district on the occasion of Children's day 14 November 2015. In this programme about 218 participants were participated.